



ART & DESIGN: A-LEVEL PHOTOGRAPHY

LEARNING JOURNEY

From February through to May (of Y13) students will undertake their AQA component 2 (externally set exam paper)- where each student will select a question to respond to that they will develop and experiment with over the preparation period leading up towards their final 3 day (15 hour) exam. Students will use the skills they have gained over the course so far to make a personal, informed and meaningful response to their exam question which will be resolved in the 15 hour exam. Over the 12 week Prep Period students will ensure that they meet each AO and refer to exemplar from the AFL BANK

Y13 Students hand in Component 1 and begin their Component 2 Exam investigation which will run from February of Y13 through to May Y13, in which time they will prepare and finalise their exam portfolio work worth 40% of their final Grade along with preparing for their final 3 day exam



COURSEWORK Final Pieces COURSEWORK Essential Sheets

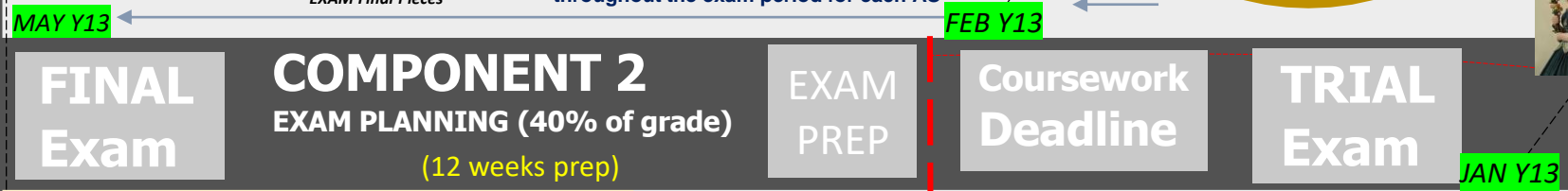


Students develop exam prep work in sketchbooks leading towards planning a series of final pieces to be completed in the 3 day exam along with "Essential Sheets" that explain and evaluate the work completed throughout the exam period for each AO

UNIVERSITY

POST KS5 PATHWAY

Apprenticeships



In January of Y13, students will complete a 15 hour TRIAL exam where they produce a final piece to resolve their coursework investigation & theme in a series of personal outcomes which will have been planned and tested extensively before resolution. Each piece is personal and completed in a media and approach that are relevant to the students' investigation

Students will continually refine their personal investigations for coursework following next steps and feedback from teachers as part of their A02 Assessment objective and will endeavour to improve their work completed to the highest level possible

All students will complete one 3000 essay (written academic response) to compliment & rationalise the supporting practical work being completed in their personal investigation. Students complete several drafts before submitting a final draft for the January deadline, once they have included a final paragraph to explain their final pieces completed in the trial exam



Students regularly review and assess their work with staff and consider the impact of assessment / development of ideas in their work



Resources and planning underpinned with past exemplar are used regularly in lesson to ensure progress is meaningful and consistent

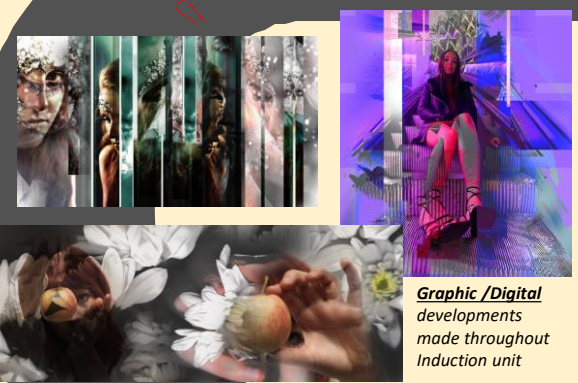
Students begin their PERSONAL investigation based on a theme/ issue/ question of their choice, beginning by gathering ideas and research to inform Photographic sets and development. At all stages of the work, ideas and progression are discussed and negotiated with staff to ensure the best progress can be enabled

A04 Final Piece / Realise intentions... A01 Creative Development / Based on Research... A03 Starting points / Initial ideas and drawings... A02 Experiment with Techniques and Ideas / Refine your work as you progress

Students are given regular feedback both verbally and through written Next steps / assessment for each sheet and piece completed. Examples of past units are used regularly to develop understanding and prompt ideas for students, alongside boosting their knowledge of grading and Assessment. Examples of past units are presented in AFL BANK resources accessible in school and remotely through TEAMS/ Access using the QR code below



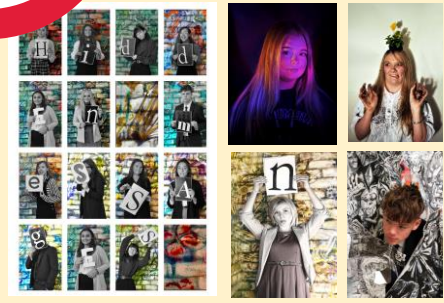
bit.ly/AFLBANK



Graphic / Digital developments made throughout Induction unit

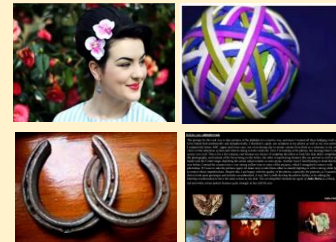


Evidence and Showcase of images completed in A3 Workbooks



Graffiti Outcome Graffiti, Graphic, Props, and Dark Portrait Sets

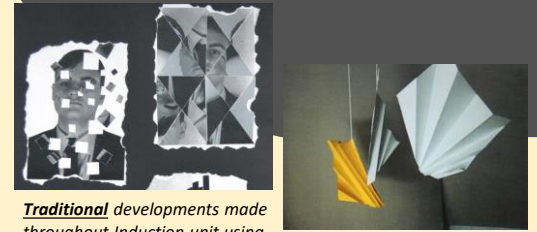
Students begin their A-Level component one Photography investigation following a foundation/ prescriptive unit, using a mixture of traditional and digital approaches of development and recording leading towards a series of outcomes presented in A3 workbooks
Photography sets inspired from Photographers and Artists' will underpin the development/ format in each part
The prescriptive unit is designed to meet each of the four Assessment objectives (AOs) needing to be evidenced in the work (Recording, Research, Experimenting, Refining & Resolving work)- which will aid students in following an effective format for their own personal investigation



4 Bridging Tasks based on the starting points, Alphabet, Visual Elements, Portrait and chosen research support students with early investigations/ development

Prescriptive Direction /Tasks

Each set and development taught in lessons (and presented in books) is intended to give students an effective repertoire of skills and model effective practise to ensure success when students embark on their personally determined investigation (starting in January of Y12)



Traditional developments made throughout Induction unit using Paper as a starting point

COMPONENT 1 begins... (60% of grade)

Sept Y12

Year 12

Students will have completed a series of bridging tasks (set over summer of Y11) which will be used to form a strong start to Y12 investigations

Y12/13: ART A-LEVEL PHOTOGRAPHY