



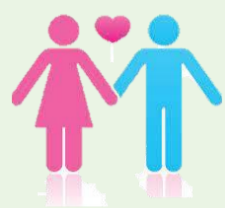
THOMAS ALLEYNE'S HIGH SCHOOL

PSYCHOLOGY: LEARNING JOURNEY

PSYCHOLOGY SKILLS:

- Demonstrate knowledge and understanding of scientific ideas, processes, techniques and procedures.
- Apply knowledge and understanding of scientific ideas, processes, techniques and procedures.
- Analyse, interpret and evaluate scientific information, ideas and evidence.
- Mathematical and statistical analysis skills

Issues & debates topic is synoptic and uses content from across the whole curriculum. Key ideas will have been introduced throughout the previous learning so focus here is on types of questions and how to use synoptic skills.



University/ Apprenticeship/ Work

POST-18 PATHWAY

Schizophrenia topic requires the review and application of the assumptions and evaluation of the approaches. It builds on elements of biopsychology and psychopathology. This topic has many opportunities for writing 16 mark essays to build exam skills ready for mock exams.



Forensic Psychology content is well liked by students and motivates students throughout the course. Builds on approaches and has opportunity to practice 16 mark exams questions.



Relationships content is well liked by students and engages them positively towards the end of the course. More optimistic than the other two options so finishes with a love of the subject and awareness of how psychology can apply to their everyday lives.



Mock Exams
2 papers x 1 1/2 hour
Paper 1 memory & social influence
Paper 2 approaches & rm
AQA past papers

Psychopathology topic requires an understanding of the different approaches in psychology and introduces students to concepts such as diagnosis ready for SZ.



PSYCHOPATHOLOGY

Biopsychology links well from the biological approach taught previously. Subsections are more discrete in this topic so fit well with other wider school activities in the summer term. Key ideas are needed for the psychopathology (OCD) and for year 2 topics (eg causes of SZ)



BIOPSYCHOLOGY

Baseline assessment
Recall test based on all paper 1 and paper 2 material covered in year 12



Stretch – additional resources and/or lessons looking at going beyond the curriculum and evaluative skills needed for A/A* grades
Boost - additional lessons focusing on key topics and basic knowledge for students at risk of E/U grades

Year 13

Attachment content builds on research method technique of observation and psychology of the economy. Establishes knowledge of family studies ready for the biological approach.



RESEARCH METHODS

Approaches content includes key knowledge of key assumptions and evaluation of different approaches that underpin the psychopathology topic and the three option units and can be interleaved with these applied areas.



APPROACHES



Year 12 Exam
2 papers x 1 hour
Paper 1 memory & social
Paper 2 approaches & rm
AQA past papers

Social influence topic established further understanding of key concepts used throughout the rest of the course such as ethic, validity and androcentrism. Also an engaging first topic with some classic psychological research.



SOCIAL INFLUENCE

Research methods is fundamental part of understanding psychological research and can appear in any section on any exam paper. Studying this topic early enables students to use this knowledge in evaluation through the course and allows lots of retrieval practice and access to all past questions in topic areas.



MEMORY

Bridging work & baseline assessment
Initial measures of ability and understanding in subject



Year 12

Y11 Taster Sessions / Transition days



Memory topic establishes strong disciplinary knowledge of scientific processes and how psychology develops through evidence from research. Starts maths skills and introduces subject specific terminology that will be used throughout the course.

WELCOME

Students have not studied psychology before. Most common reasons for choosing are "sounds interesting", "to know how the mind works" & "to know why people behave in the ways they do"